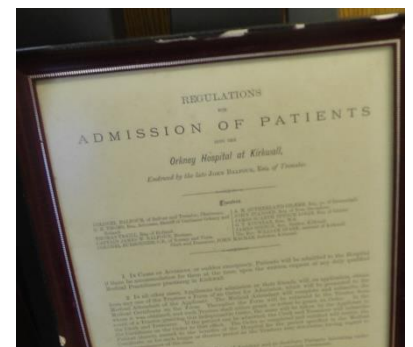
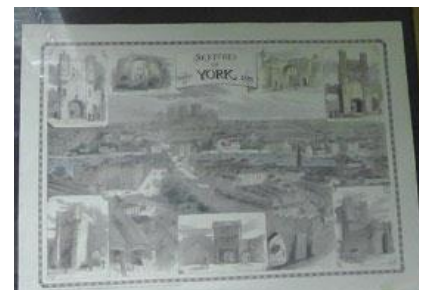
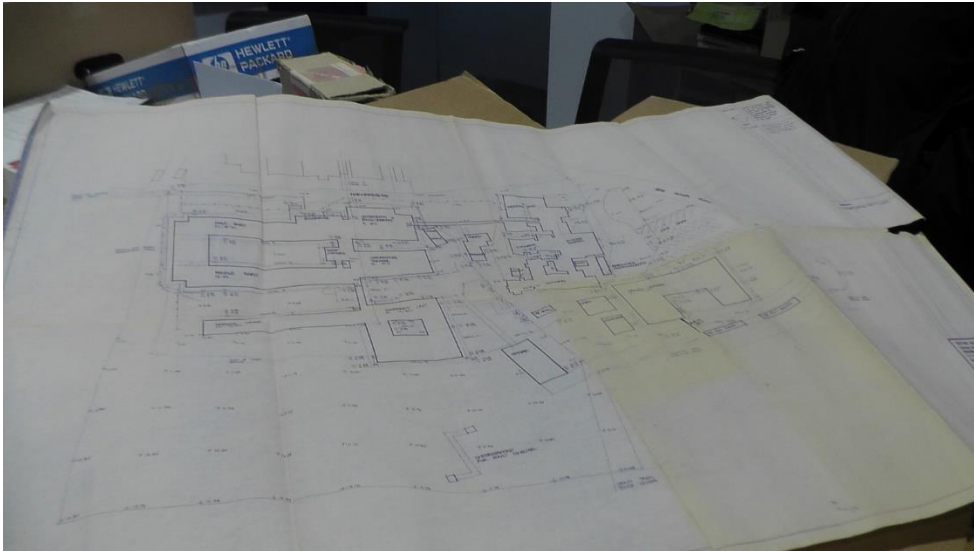


Appendix 1:

Examples of Historical Pictures, Photographs, Plaques and Medical Equipment

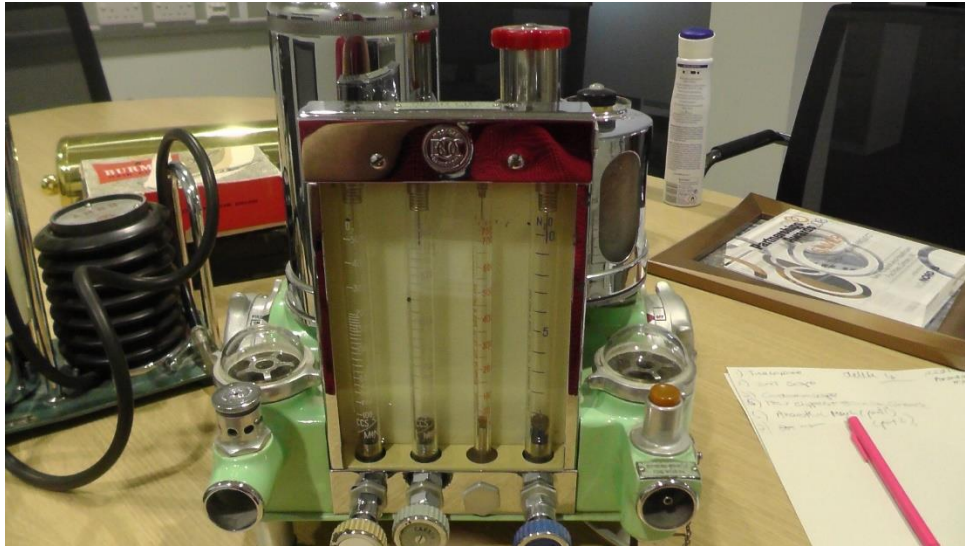




Plan of Balfour Hospital March 1984

Medical Equipment

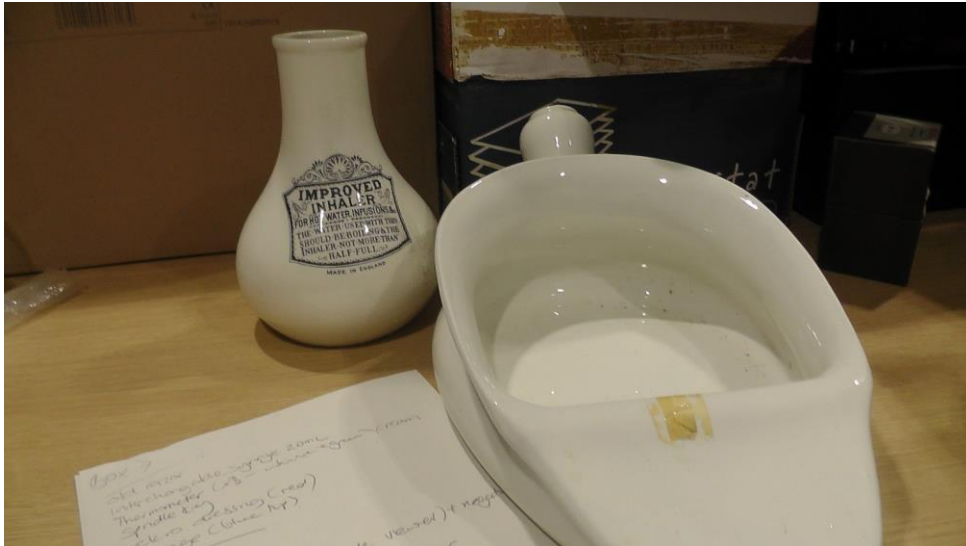




Anaesthetic Machine



Inhaler and Medicine Bottles



Ceramic Inhaler and Bed pan



Palmer Injector Kit, Tin Urinal and Kidney Dressing Dishes, Syringes, Various Tools, Maternity Hearing Cup, Miscellaneous Instruments



*Medical Equipment Sets (x3), Various Needles, Slide Synchroniser,
Plastic Nit Comb, Bunion Pad, Ring Pessary*



GP Bag



Microscope

Appendix 2:

Existing Artwork Commissions and Location for the History Wall



The Hub, Balfour Hospital



Samantha Clark 'Flow'



Jack Whitwell 'Copper Herring Wall'



Proposed location for the History Wall